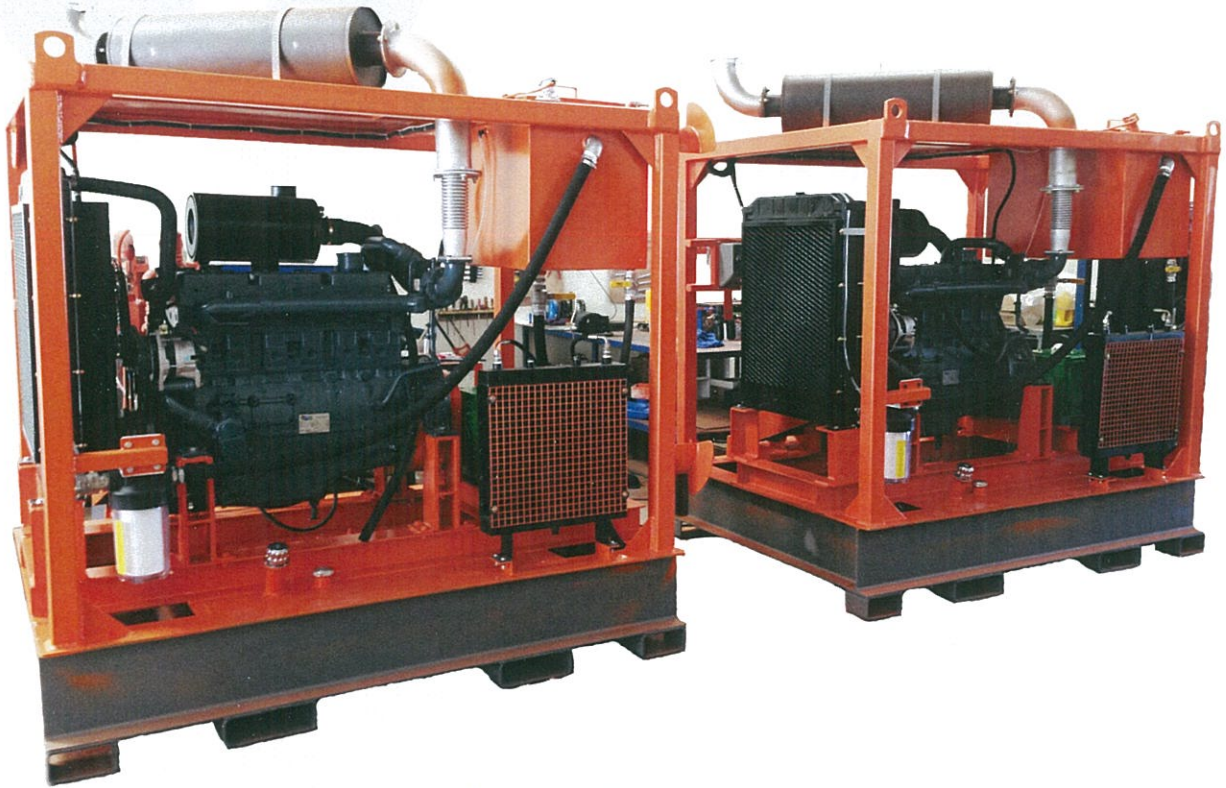


ULTRA HIGH PRESSURE PUMP UNITS



KAMAT PUMPS TYPE	FLOW max. L / min.	PRESSURE p max. bar	POWER max. kw
K 108 A	4	2000	15
K 4500	232	2100	45
K 8000	283	2950	75
K 9000	283	3100	90
K 10000 - 3G	449	3500	110
K 11000 - 3G	454	1630	110
K 13000 - 3G	496	1750	130
K 18000 - 3G	522	3500	180
K 20000	957	2800	200
K 25000	1148	3200	250
K 35000 - 3G	1310	3500	350
K 40000 - 3G	1310	3500	400
K 50000 - 5G	1913	3500	530
K 55000	2363	3000	550
K 80000	3482	3500	800
K 120000	3939	3500	1200



HIGH PRESSURE PUMP UNITS



PUMP TYPE	Type	Min Flow L / min.	Max Flow L / min.	Max Bar
Standard Version Series	NP	1	69	500
Standard Version Series	P	3	320	1200
Pumps - Motors combinations		10	15	180
Duplex Version		48	134	150
Bentonite Version		23	650	130
CO2 Version		5	195	150
Hot water version		6	15	100
Dosing for PUR technology		2	7	220
Seawater Version		5	400	350
Nickel Plated Version		1	70	210



ULTRA HIGH PRESSURE PUMP UNITS



TERRA Technology FZE products are developed and manufactured based on our specific needs of our customers. Our UHP and HP are manufactured using German technology using pumps from Kamat Pumpen GmbH.

TERRA TECHNOLOGY PROVIDES COMPLETE PACKAGES:

- Design Engineering drawings in 2D & 3D
- Manufacturing of skids
- Testing and Commissioning
- After Sales Technicians

DOCUMENTATION, CERTIFICATES AND REPORTS

- ✓ MTC of all items
- ✓ String test
- ✓ FAT reports
- ✓ NDT reports
- ✓ Welding reports
- ✓ Piping hydro-test certificates
- ✓ Manufacturing data record book
- ✓ Record of factory acceptance and run test
- ✓ Third party inspection

This certification, documentation and reports are available upon request

UNIT SPECIFICATIONS

All our **Ultra High Pressure Pump Units** are custom made based on customer requirements and can include the below option to suit the needs of each customer.

- Base frame, skid with lifting eyes, trailer, trolley
- Electric / Diesel driven
- Water tank stainless steel with accessories
- Diesel tank
- Pressure safety valve and pressure regulator
- Booster pump
- Control panel
- Extended warranty
- Explosion proofing

